

Using the TCU treatment process model to illustrate the impact of financial cuts on substance abuse treatment services

TCU Treatment Process Model Under Pressure

D. Dwayne Simpson
and Colleagues
Texas Christian University

Slide 1 of 9

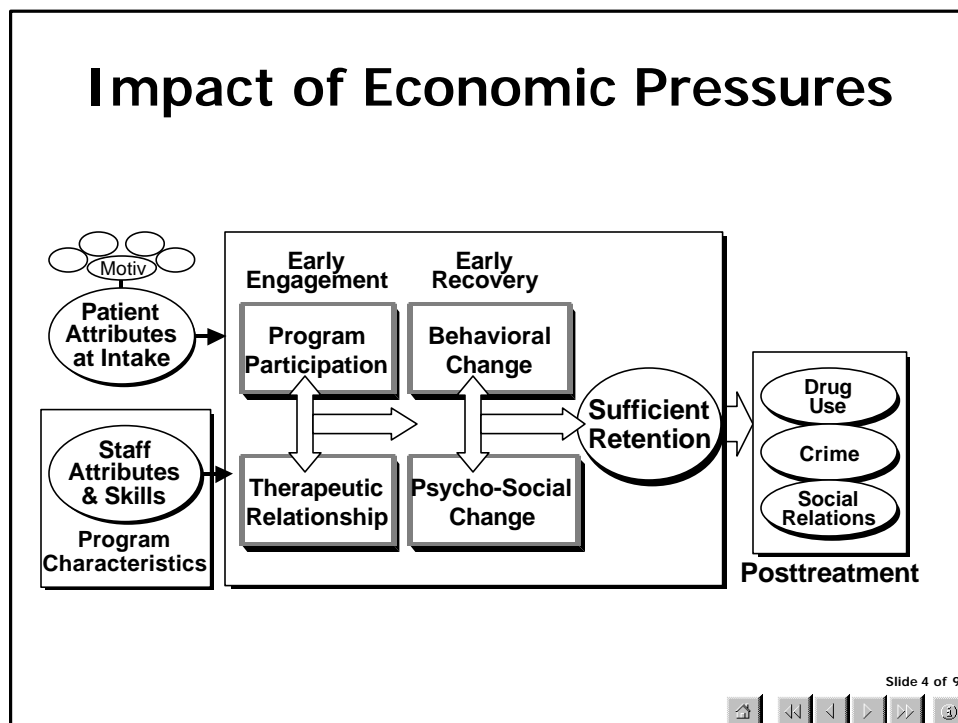
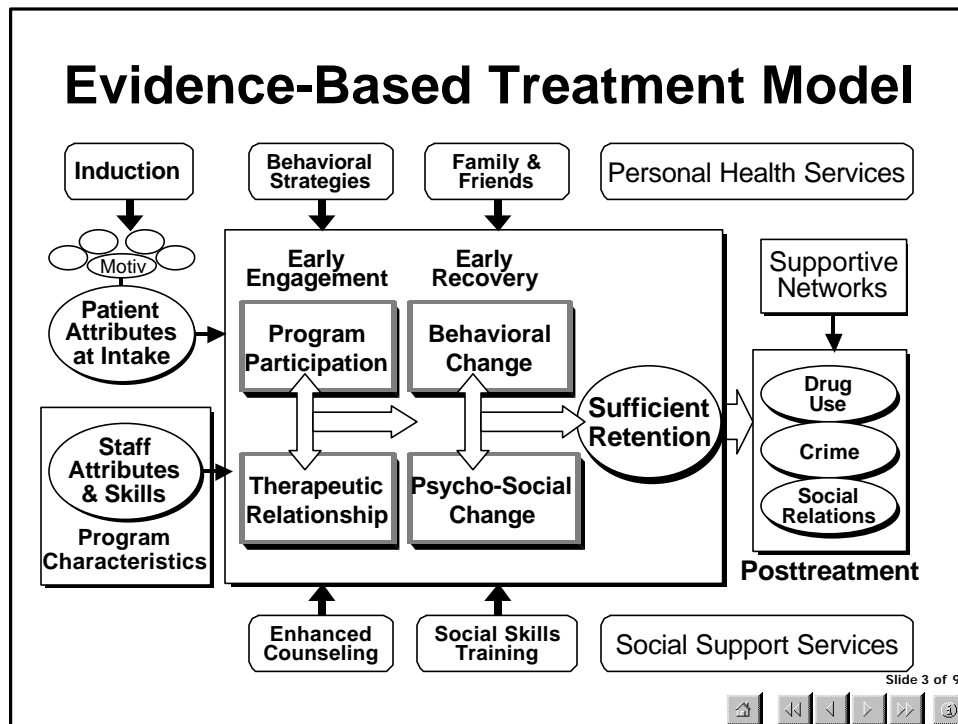


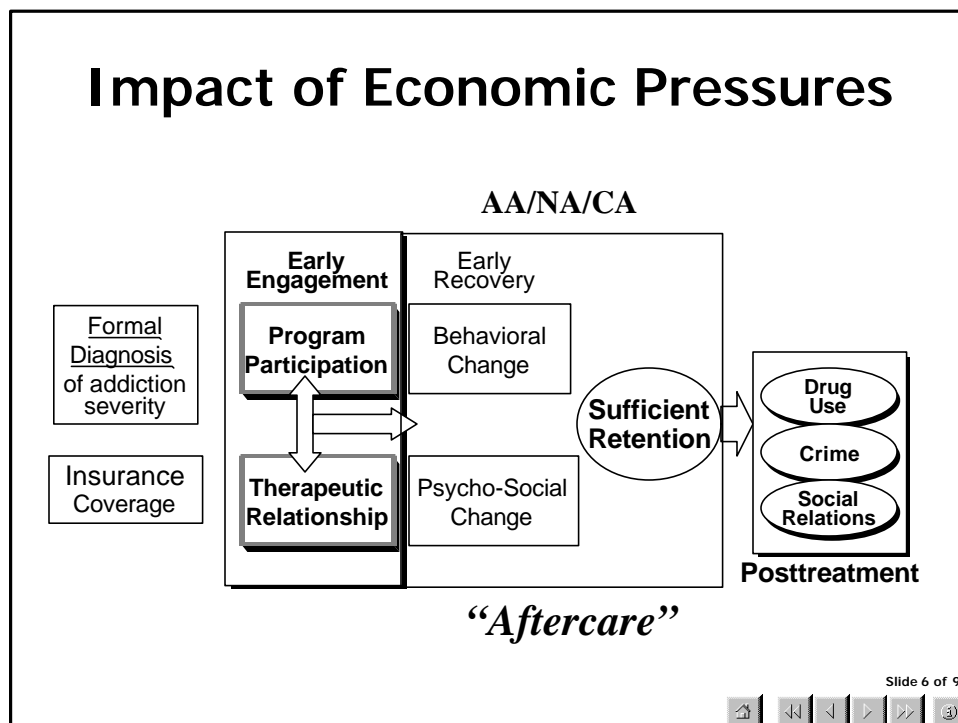
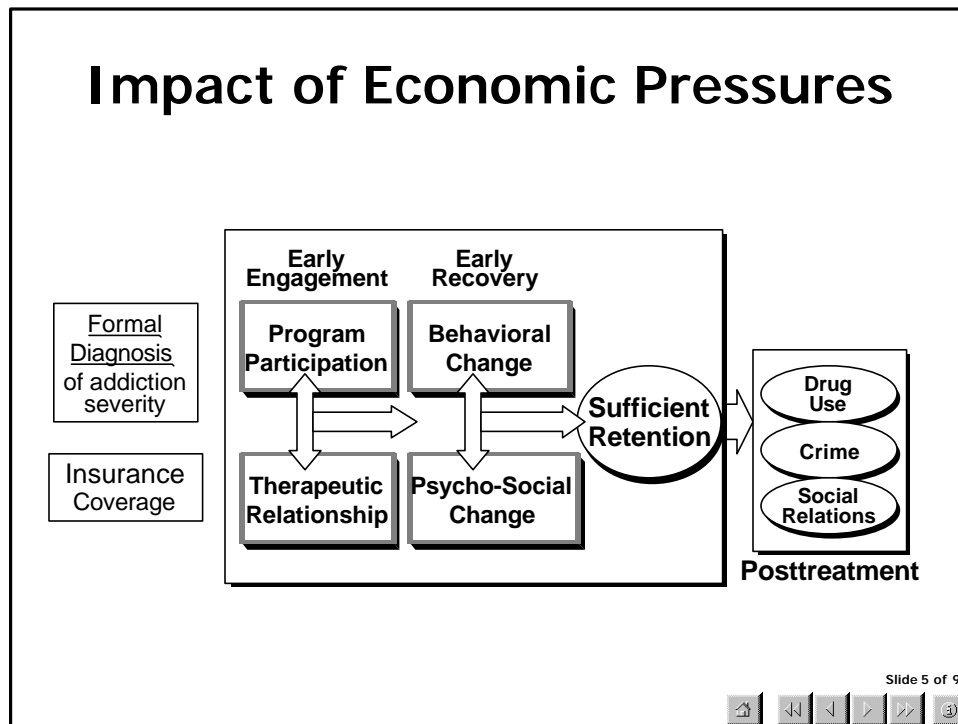
Threat from Growing Economic Pressures

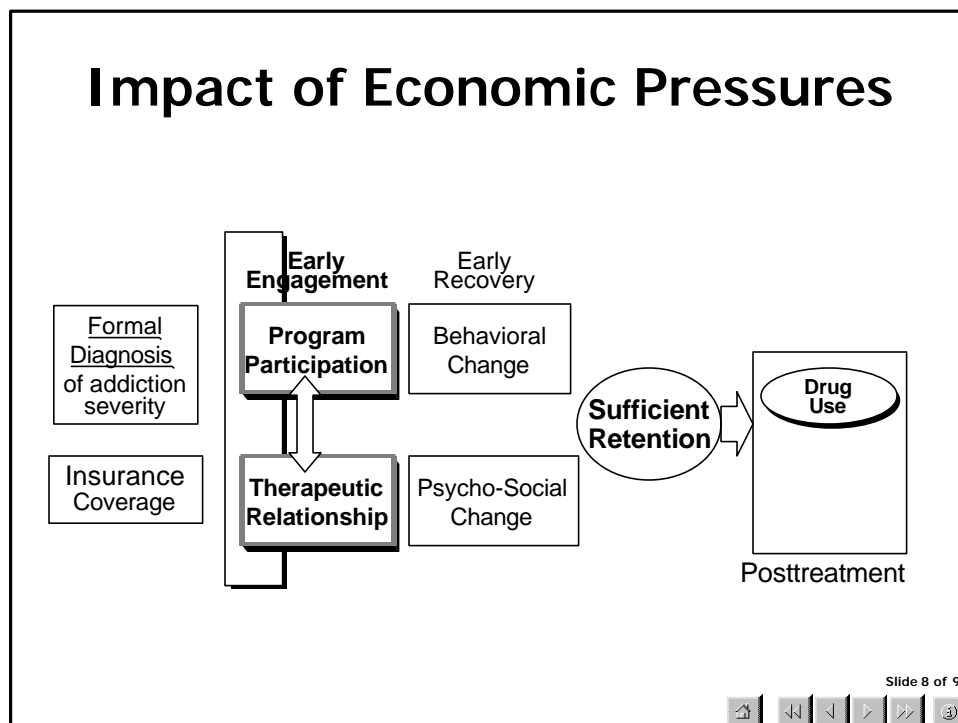
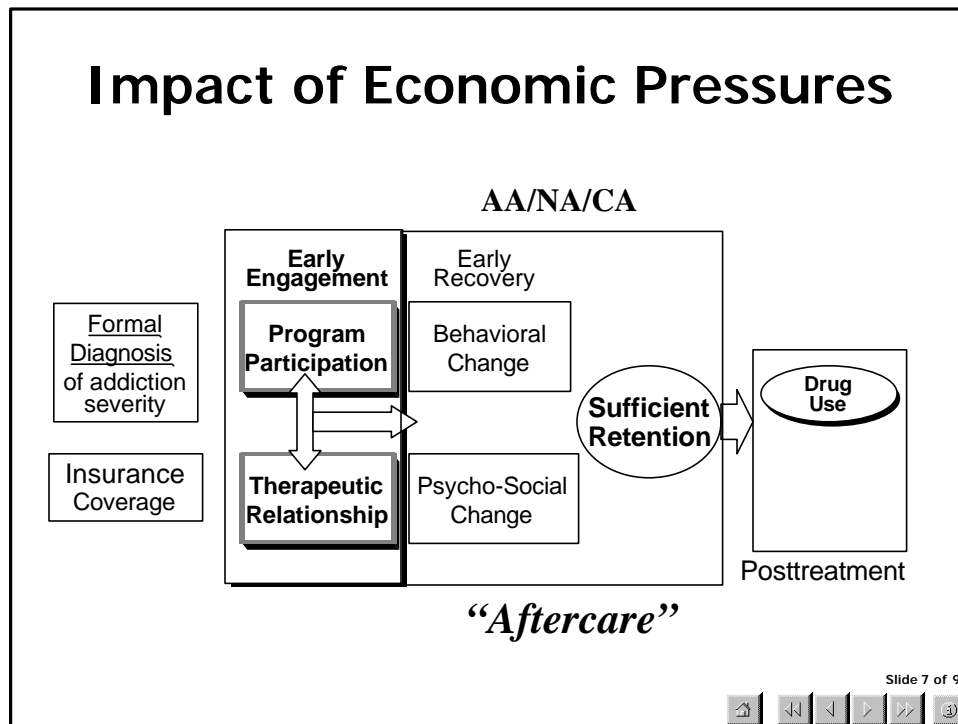
- ◆ **Limits “wrap-around” services**
- ◆ **Minimizes treatment duration**
- ◆ **Shifts “aftercare” to community**
- ◆ **Reduces outcome accountability**

Slide 2 of 9









TCU Institute of Behavioral Research at Texas Christian University **IBR**

IBR HOME PAGE
[WHAT'S NEW](#)
[ABOUT IBR](#)
[STAFF](#)
[PROJECTS](#)
[NEWSLETTERS](#)
[PUBLICATIONS](#)
[WEB POSTERS](#)
[MANUALS](#)
[FORMS](#)
[OTHER LINKS](#)

SITE GUIDES:
[Search](#)
[Contents](#)
[Site map](#)

The IBR conducts evaluations of drug abuse intervention programs in community and correctional settings.

TCU Treatment Process Model now available for downloading

TCU Counseling Manuals can be ordered or downloaded

TCU Treatment Assessment Forms are organized for easy (& free) downloading by users

www.ibr.tcu.edu

Features:

- [Animated slide presentations](#)
- [IBR Research Summaries highlight special topics](#)
- [Current issue of Research Roundup](#)
- [Publication lists](#)
- [10 most popular TCU forms for downloading](#)

Slide 9 of 9