



Overview of major studies examining treatment effectiveness and the continuum of care needed for correctional populations

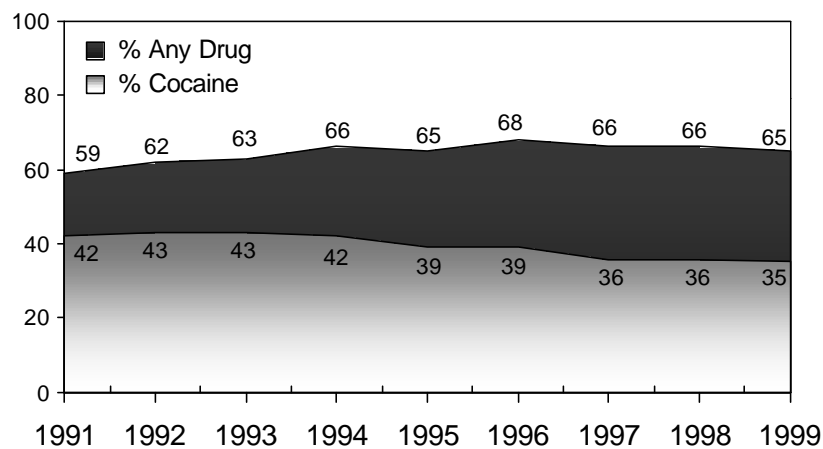
Overview of Drug Treatment in Correctional Settings

D. Dwayne Simpson
Kevin Knight
Texas Christian University

Slide 1 of 19



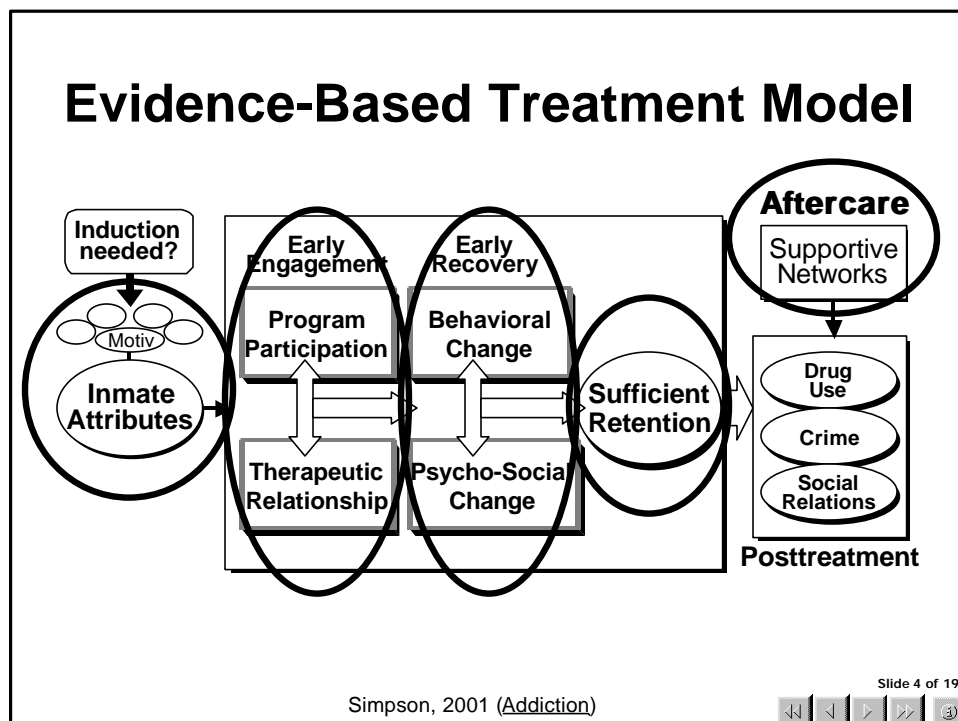
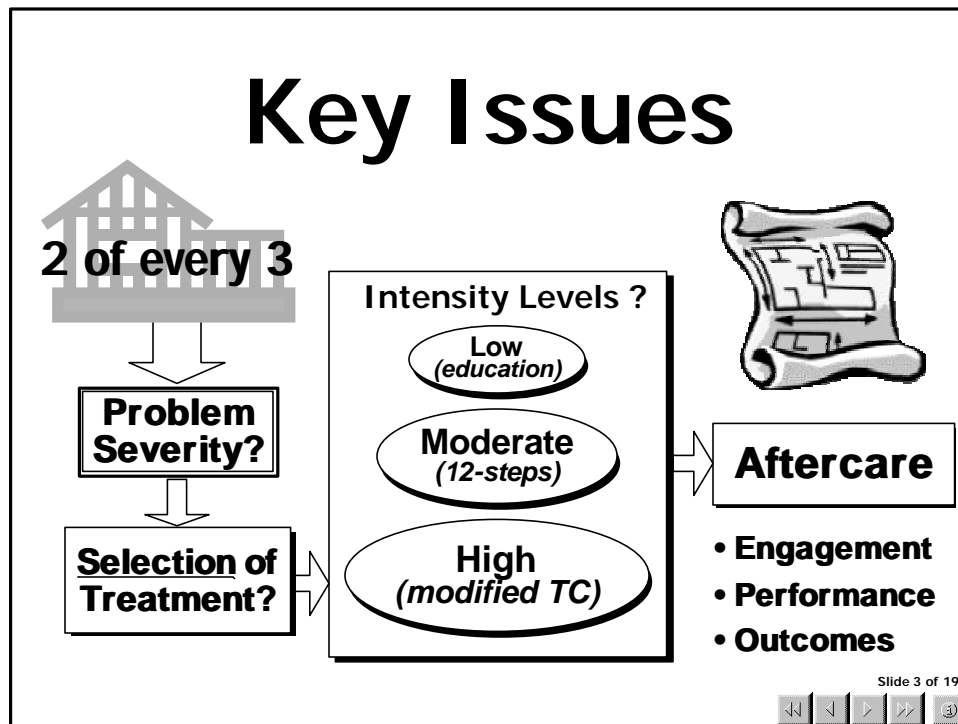
Illegal Drug Use Detected (UA+) Among Male Arrestees (in 23 Cities)*



*Based on original 23 DUF cities; 1999 data for St. Louis not available.

Slide 2 of 19

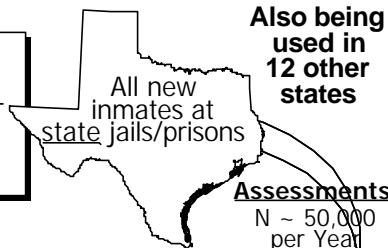




Assessing Treatment Needs

TCU Drug Screen (TCUDS):

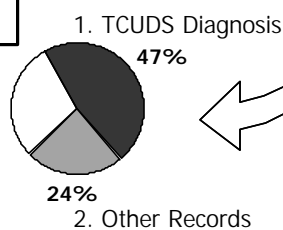
- Short assessment (2 pages) for --
- Drug problems/dependence
 - Treatment history/needs



Assessments:
N ~ 50,000 per Year

71% referred to treatment

- In-prison TC (ITC)
 - Brief interventions
 - 12-step groups
 - Drug education

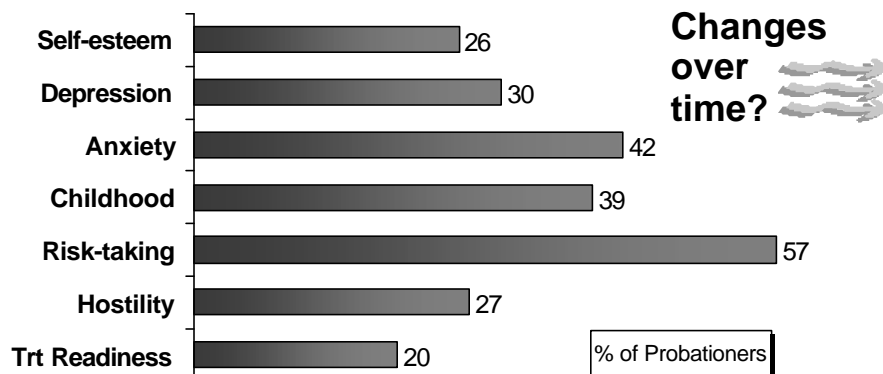


Slide 5 of 19



Problems at Treatment Admission

(TCU Self-Ratings at Intake in 1996)

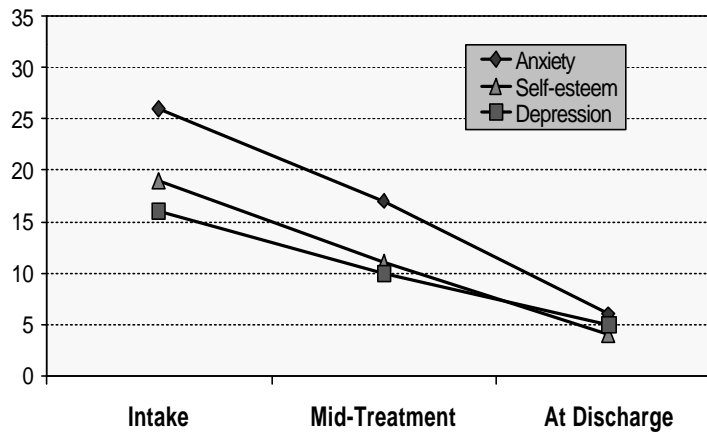


N=409; Dees, Pitre, & Dansereau, 1997, Annual Report on 1996 SATF Intakes

Slide 6 of 19



Probationer Response to Treatment (% with Problems in Psychological Functioning)

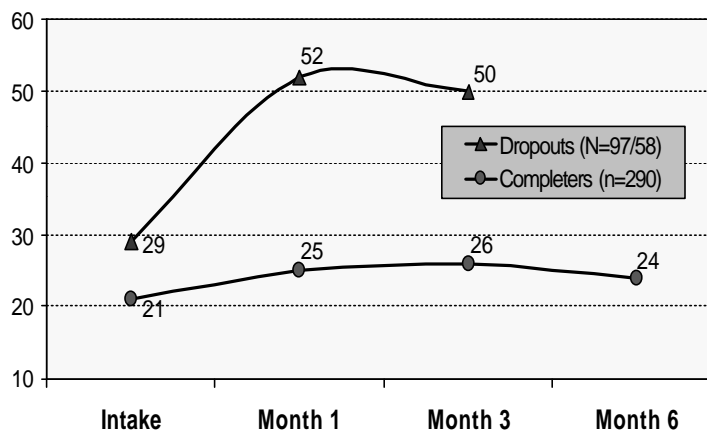


N=259; Knight & Simpson, 1994, Annual Report on 1993 SATF Intakes

Slide 7 of 19



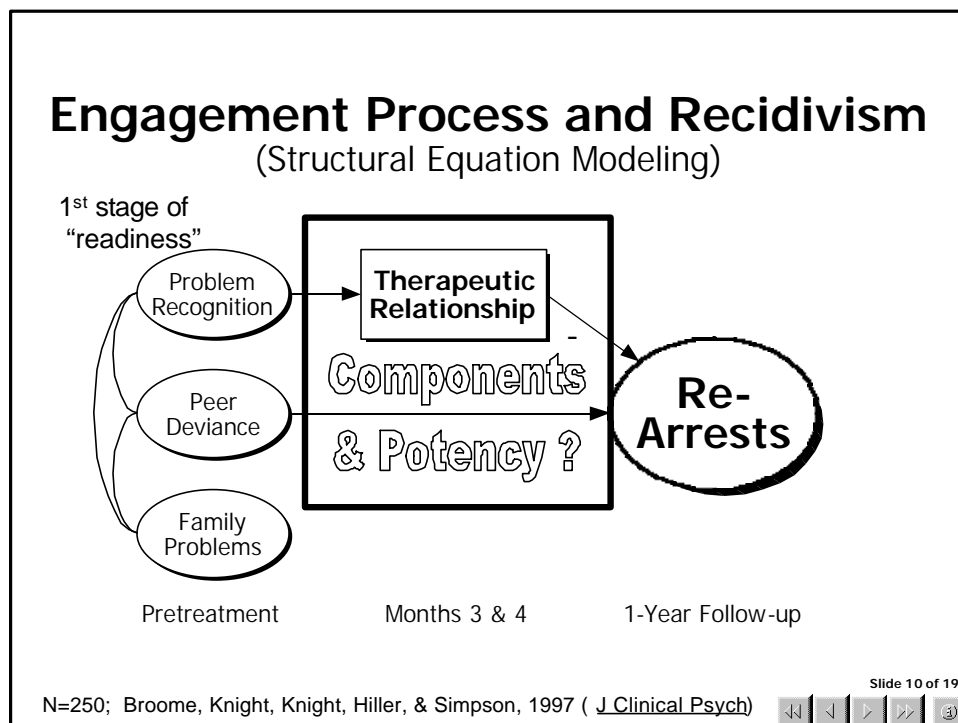
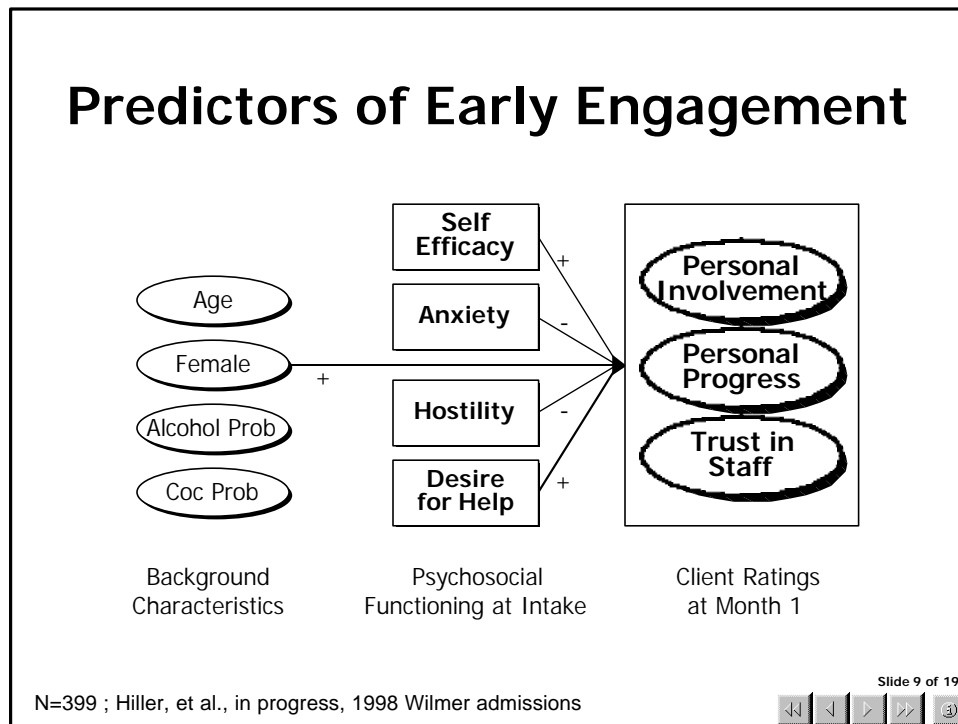
Hostility and Treatment Dropout Rates (% with high Hostility scores [4+ on 1-7 scale])



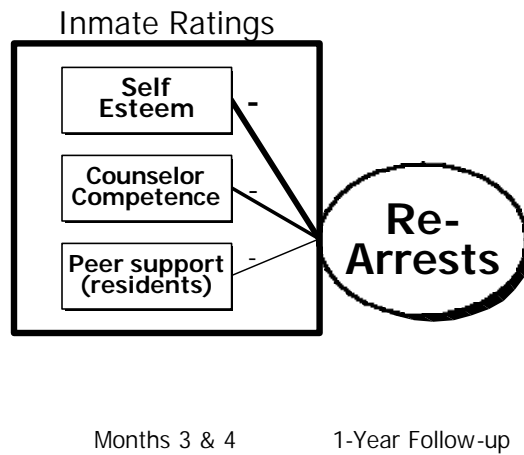
N=399; Broome et al., 2000, ACJS Conference Presentation, New Orleans, LA

Slide 8 of 19





Engagement Process and Recidivism

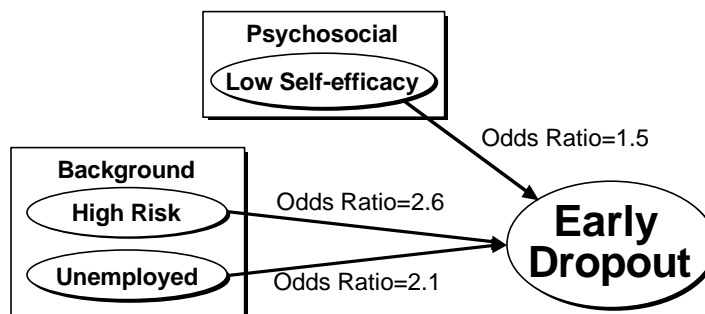


N=279; Broome, Knight, Hiller, & Simpson, 1996 (*J Sub Abuse Treatment*)

Slide 11 of 19



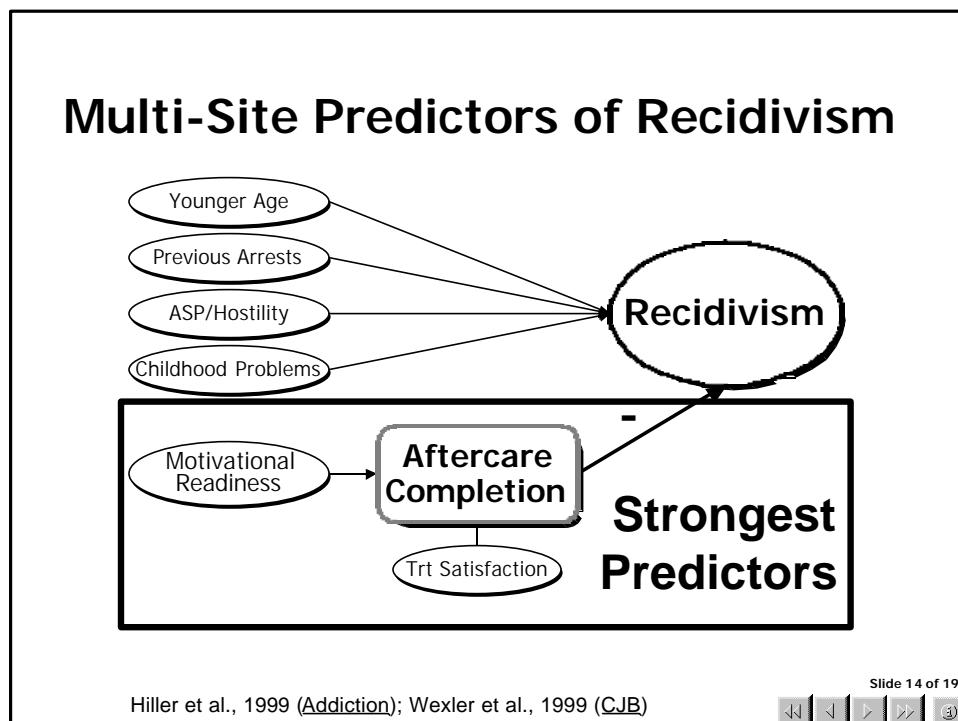
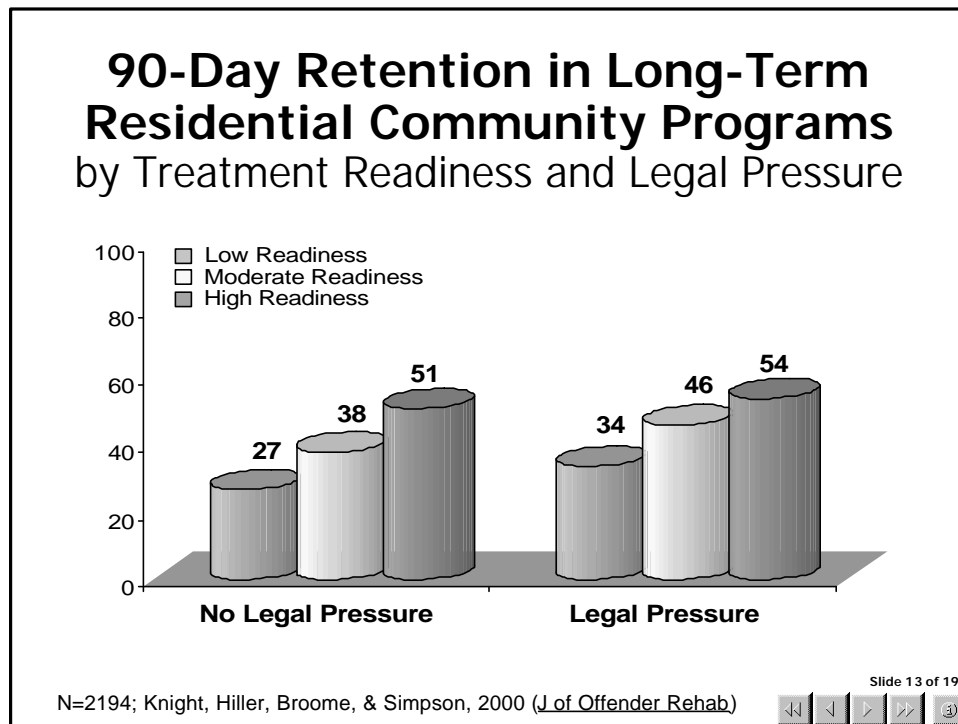
Multivariate Model of Early Dropout (Stepwise Logistic Regression)

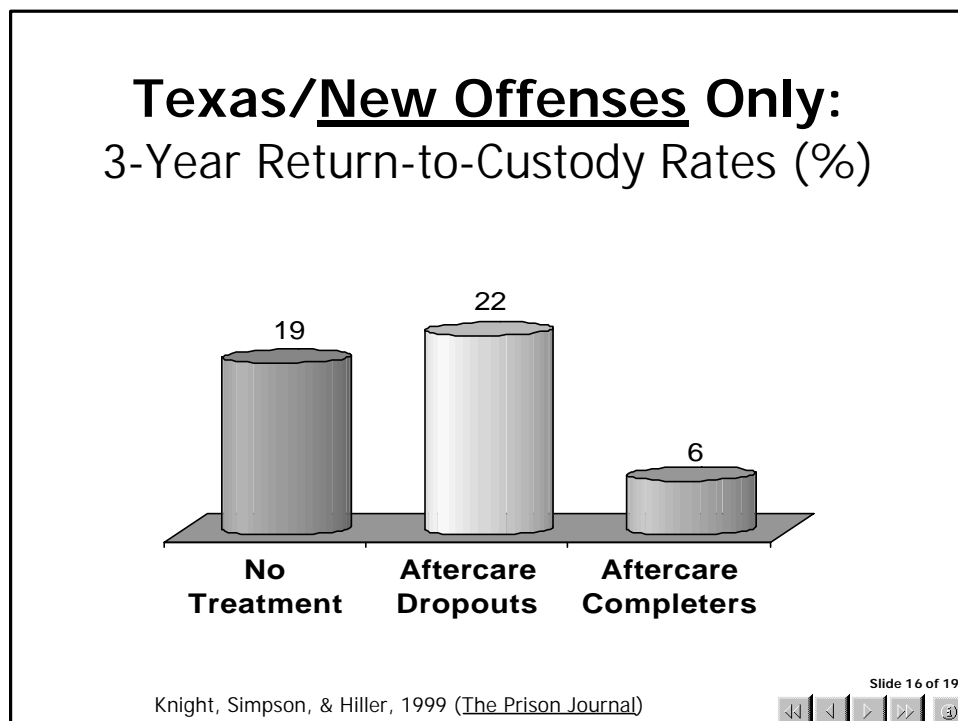
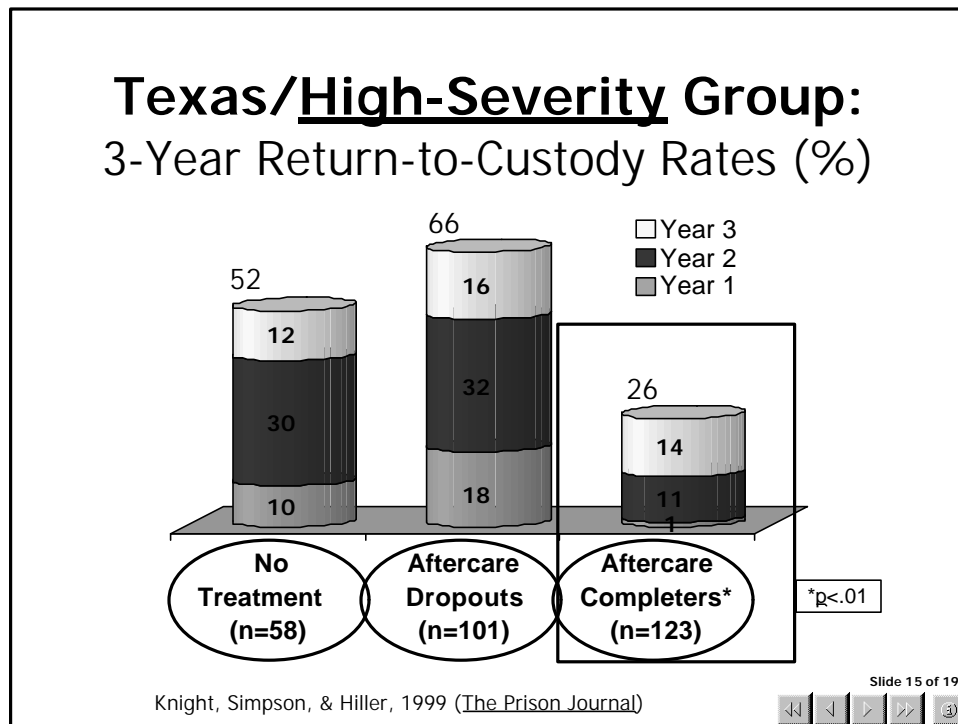


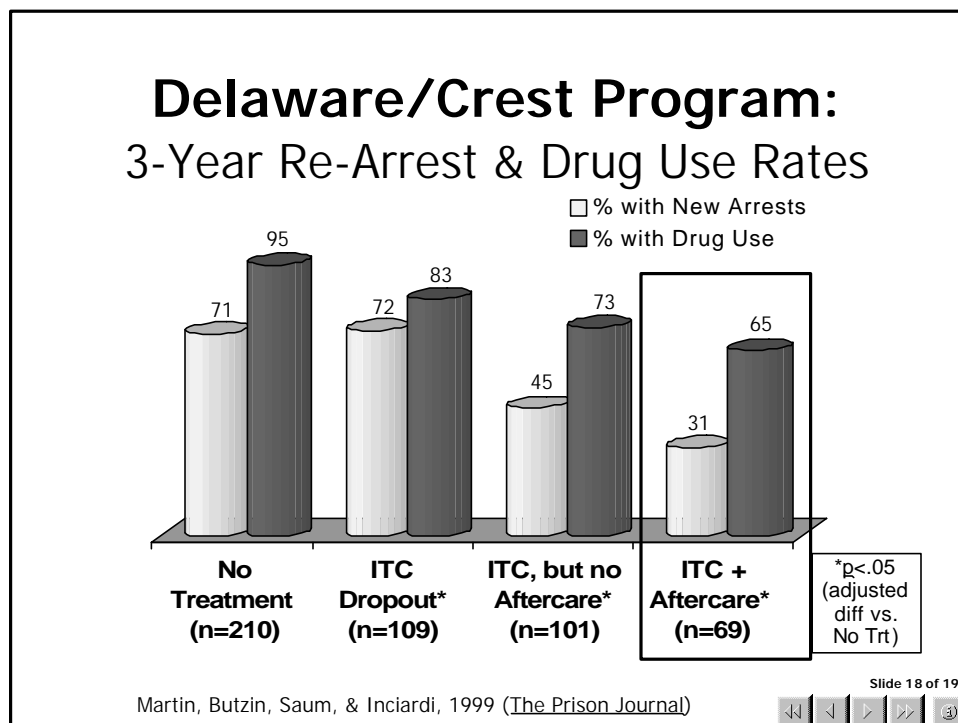
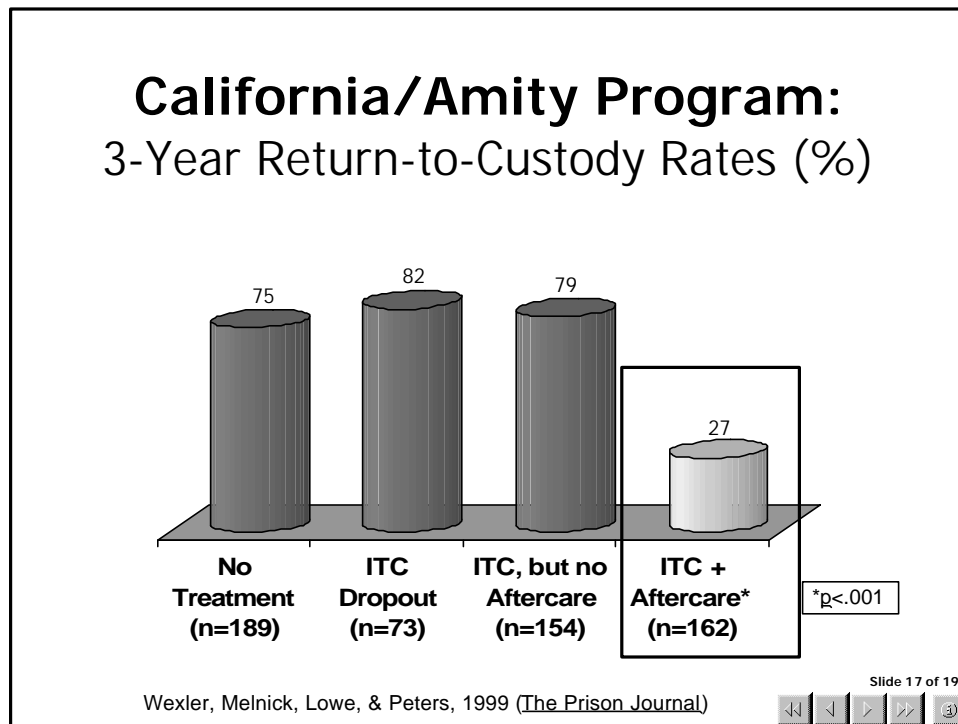
N=339; Hiller, Knight, & Simpson, 1999 (*The Prison Journal*)

Slide 12 of 19









TCU Institute of Behavioral Research at Texas Christian University **IBR**

IBR HOME PAGE
[WHAT'S NEW](#)
[ABOUT IBR](#)
[STAFF](#)
[PROJECTS](#)
[NEWSLETTERS](#)
[PUBLICATIONS](#)
[PRESENTATIONS](#)
[MANUALS](#)
[FORMS](#)
[OTHER LINKS](#)

SITE GUIDES:
[Search](#)
[Contents](#)
[Site map](#)

The IBR conducts evaluations of drug abuse intervention programs in community and correctional settings.

TCU Treatment Process Model now available for downloading

TCU Counseling Manuals can be ordered or downloaded

TCU Treatment Assessment Forms are organized for easy (& free) downloading by users

Features:

- Animated slide presentations**
- IBR Research Summaries highlight special topics**
- Current issue of Research Roundup**
- Publication lists**
- 10 most popular TCU forms for downloading**

www.ibr.tcu.edu

DATOS

Slide 19 of 19