

Transferring Drug Abuse Treatment and Assessment Resources (DATAR-3)
(Grant to TCU funded by NIDA; 1999-2004)

Overview of TCU Research on Technology Transfer

D. Dwayne Simpson
and colleagues
Texas Christian University

Slide 1 of 26

Background

- ◆ **Treatment effectiveness is related to**
 - ✓ Problem severity & retention of patients
 - ✓ Program setting, services, & functioning
- ◆ **Treatment programs differ on**
 - ✓ Types of patients served
 - ✓ Engagement & retention of patients
 - ✓ Needs, resources, & readiness for change

◆ **NEW RESEARCH PRIORITIES**


- ✓ Monitoring patient & program functioning
- ✓ Assessing organizational attributes & needs
- ✓ Evaluating process of program change

Slide 2 of 26

DATAR 3

Transferring Drug Abuse Treatment and Assessment Resources (1999-2004)

TCU Grant Funded by the National Institute on Drug Abuse



Collaborating with four regional ATTCs for conducting TCU Workshops

Resources Training Readiness Barriers

See www.ibr.tcu.edu for more information

Slide 3 of 26

TCU "Clinical" Assessments

Intake

- Needs Assessment
- Treatment Planning
- Progress Evaluations
- Program Monitoring

Brief Intake (Electronic)

Eval of Self at Intake (CESI)

Client Eval of Self & Trt (CEST)

Services Tracking (UAs) & Discharge

Slide 4 of 26

Scales in CEST Assessment

Psychosocial

- A. Motivational
- B. Psychological
- C. Social

Treatment Engagement

- A. Treatment Needs
- B. Treatment Satisfaction
- C. Counseling Rapport
- D. Treatment Participation
- E. Peer Support (Patients)
- F. Social Support (Family/Friends)

Client Eval of Self & Trt (CEST-25 min.)

Record of Services

Slide 5 of 26

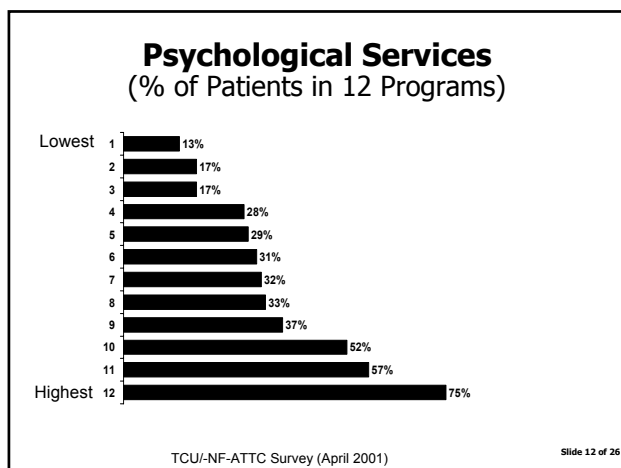
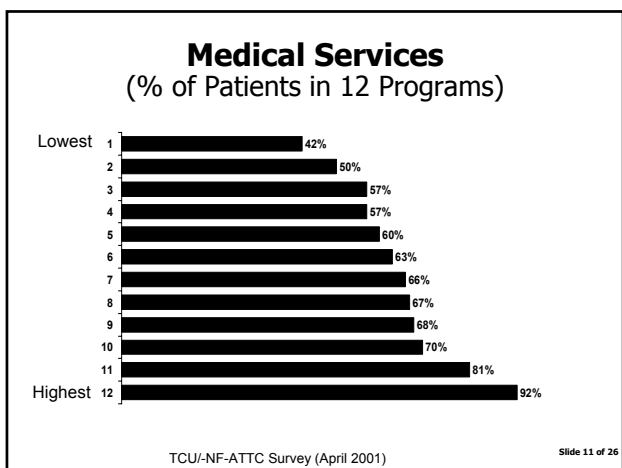
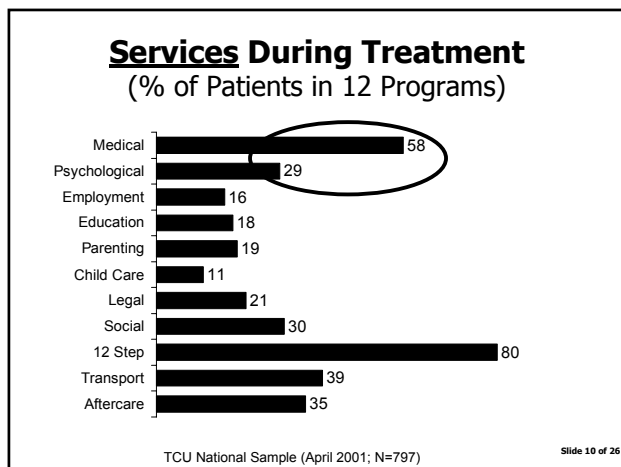
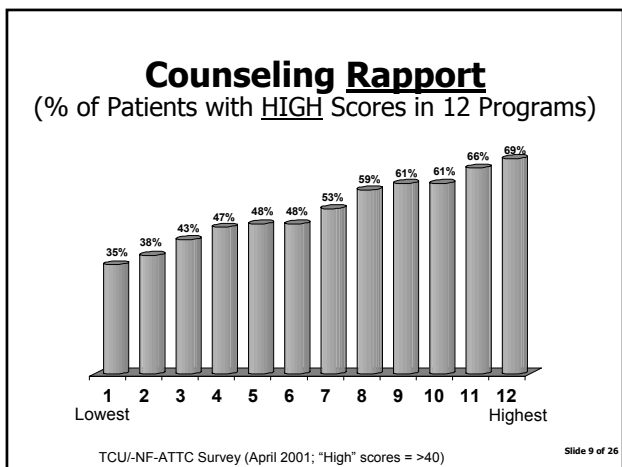
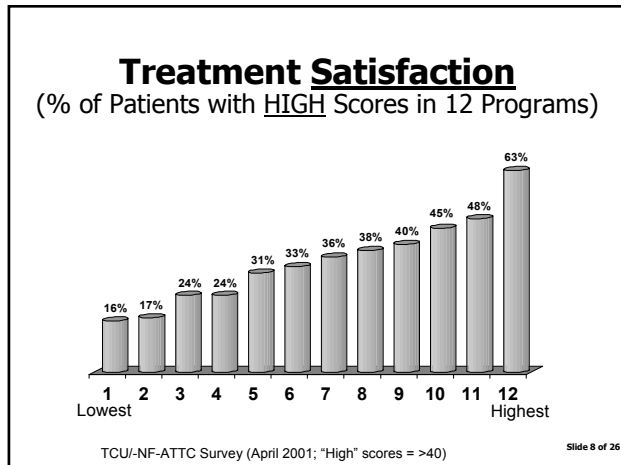
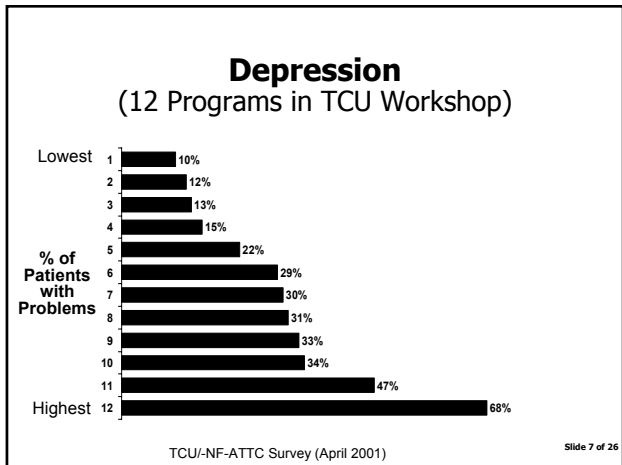
% of Patients Reporting Problems During Treatment (N=797)

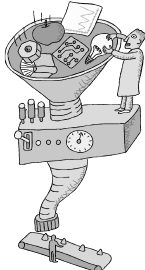
Program variations on each ?

Desire for Help	10
Trt Readiness	14
Self Esteem	22
Depression	25
Anxiety	39
Decision Making	13
Hostility	21
Risk Taking	45

TCU/NF-ATTC Survey (April 2001; "Problems" = scores ><30)

Slide 6 of 26



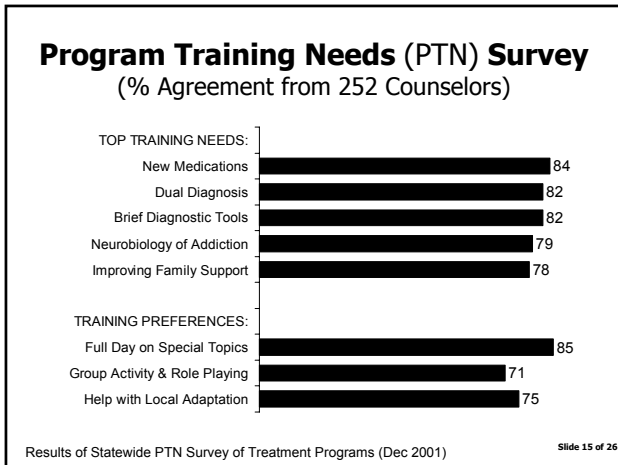
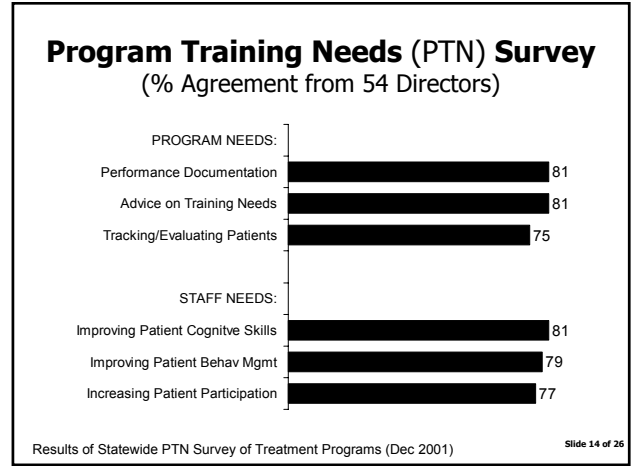
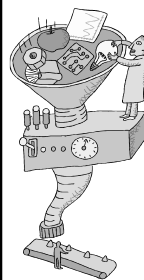


Survey of Program Training Needs (PTN)

- + **Program Type & Services ?**
- + **Program Director ?**
 - ✓ Pressures for Change
 - ✓ Program Guidance Needs
 - ✓ Staff Training Needs
 - ✓ Resources, Diagnostics, Billing
- + **Clinical Supervisor & Staff ?**
 - ✓ Facilities & Climate
 - ✓ Training Content & Strategy Preferences
 - ✓ Training Barriers

Link to Items in ORC

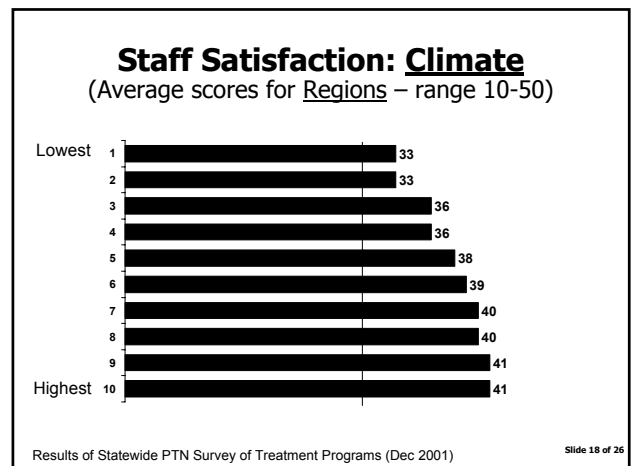
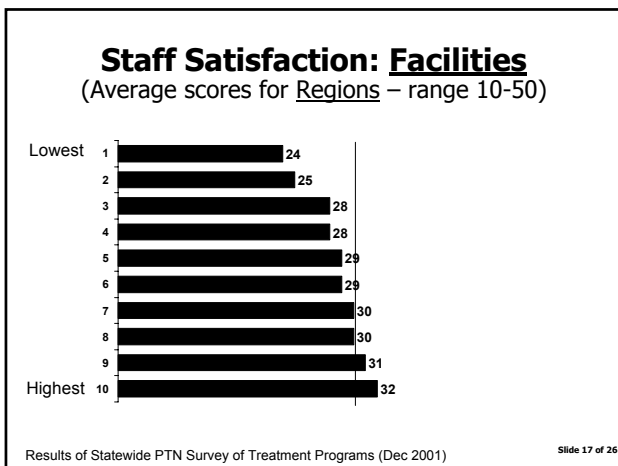
Slide 13 of 26

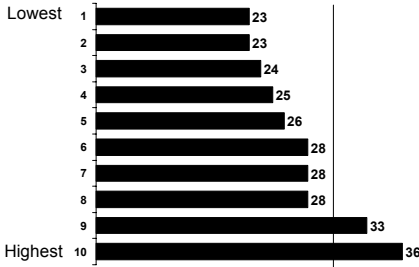
Survey of Program Training Needs (PTN)

1. Who attends training ?
2. Variations across –
 - programs/regions ?
 - program types ?
3. Use **ANNUAL** surveys to –
 - measure progress
 - monitor trends

Slide 16 of 26



Staff Satisfaction: Computers (Average scores for Regions – range 10-50)



Results of Statewide PTN Survey of Treatment Programs (Dec 2001)

Slide 19 of 26

Organizational Readiness for Change (ORC)

Motivation

- Program Needs
- Training Needs
- Pressures

Organizational Dynamics

Staff:

- Growth
- Efficacy
- Influence
- Adaptability
- Orientation

Climate:

- Mission
- Cohesion
- Autonomy
- Communication
- Stress
- Change

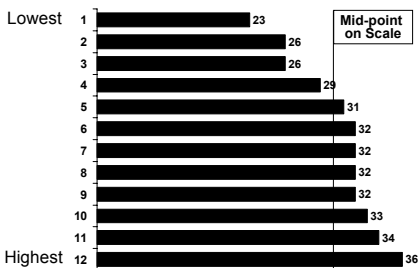
Resources

- Offices/Staffing
- Training
- Equipment

Program variations ?

Slide 20 of 26

Motivation: Overall Training Needs (Average scores – range 10-50)

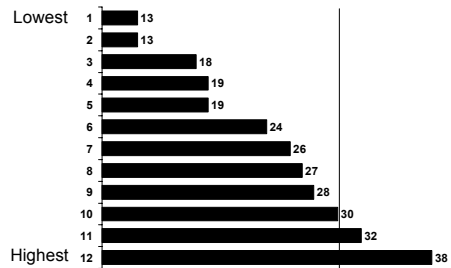


12 programs in TCU Workshop

TCU/NF-ATTC Survey (April 2001)

Slide 21 of 26

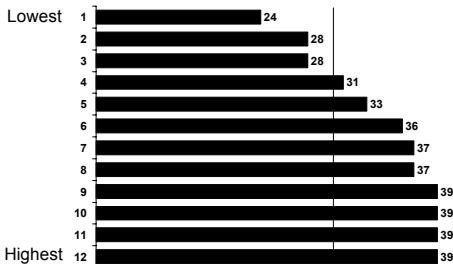
Resources: e-Communications (Average scores – range 10-50)



TCU/NF-ATTC Survey (April 2001)

Slide 22 of 26

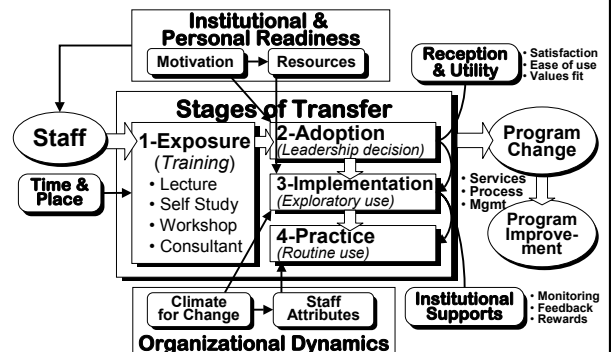
Org. Climate: Cohesion (Average scores – range 10-50)



TCU/NF-ATTC Survey (April 2001)

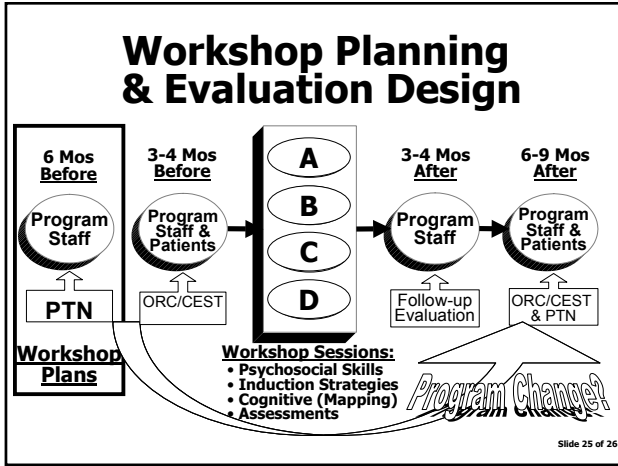
Slide 23 of 26

Program Change Model



From Simpson, 2002 (JSAT)

Slide 24 of 26



See presentations
on TCU Workshops
and related
materials
for more details

Slide 26 of 26